








Dexter Township

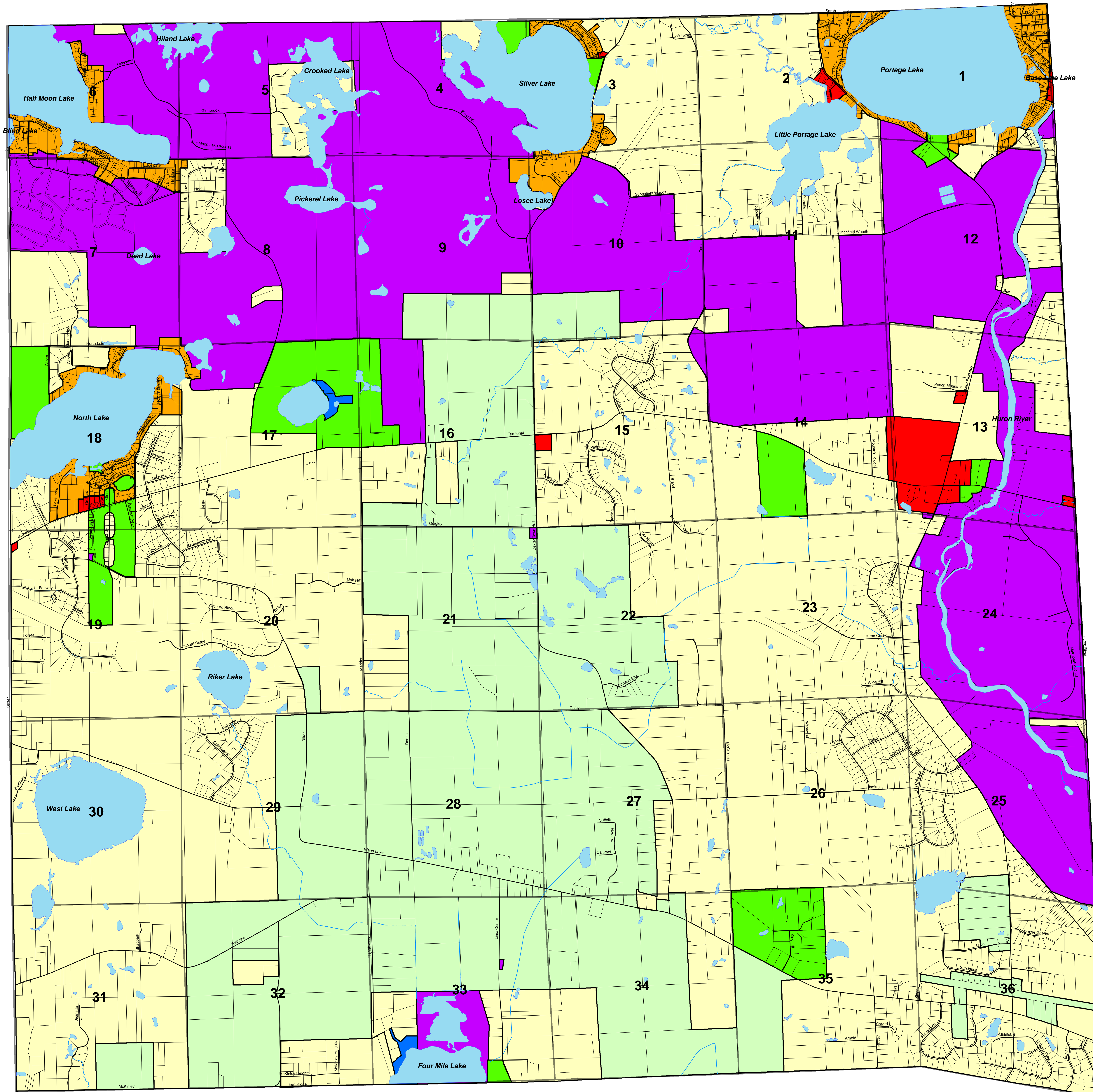
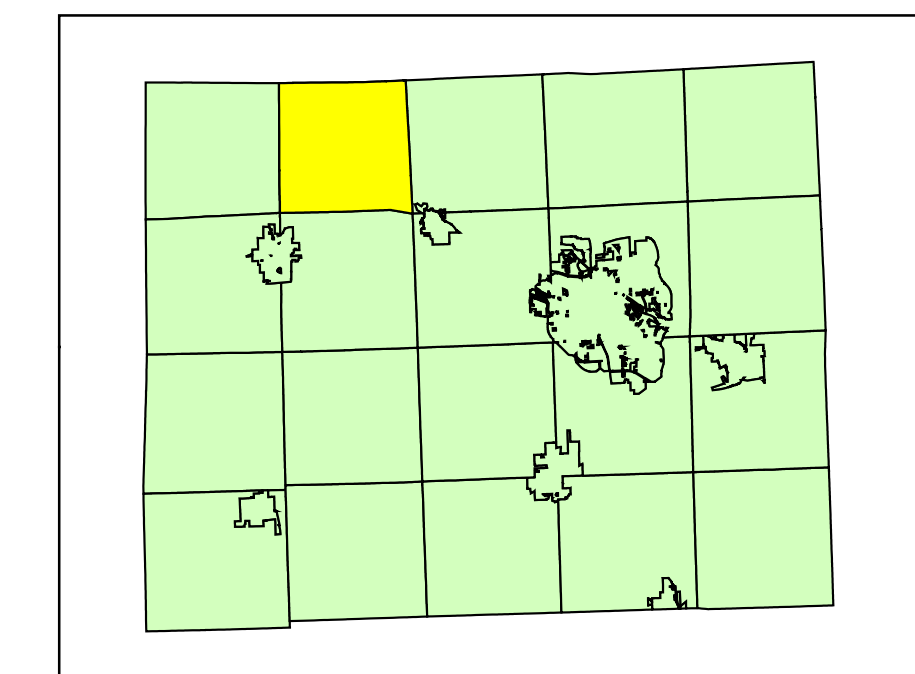
"A Community For All Seasons"



OFFICIAL ZONING MAP

Zoning Districts

-  AG - Agriculture
-  RR - Rural Residential
-  LR - Lakes Residential
-  C-1 - General Commercial
-  CU - Common Use
-  PL - Public Lands
-  RC - Recreation Conservation



Certification: This is to certify that this is the Official Zoning Map referred to in the Dexter Township Zoning Ordinance adopted on April 15, 2003.

On the following dates and by official action of the Township Board, the following changes were made in the Official Zoning Map.

Date	Revision
1/16/2007	Rezone Parcels D-04-33-300-023/024/028/029/030 to RR
1/16/2007	Rezone Parcels D-04-33-300-033 to CU
4/15/2008	Rezone Parcels D-04-02-400-007/008 to RR

Pat A. Kelly
Dexter Township Supervisor

Harley B. Rider
Dexter Township Clerk



Prepared by: Dexter Township
Sources: Washtenaw County Department of Planning and Environment; Washtenaw County Department of Geographic Information Systems

Last Updated: April 15, 2008
Published Date: April 24, 2008
Effective Date: May 10, 2008

