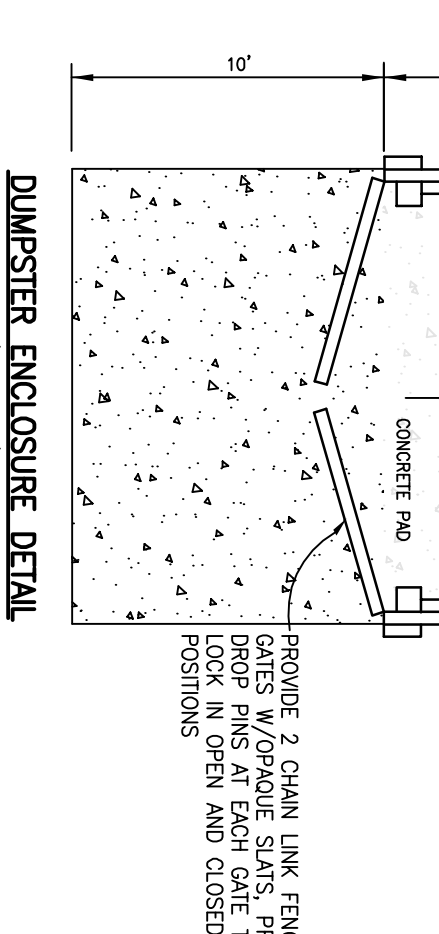
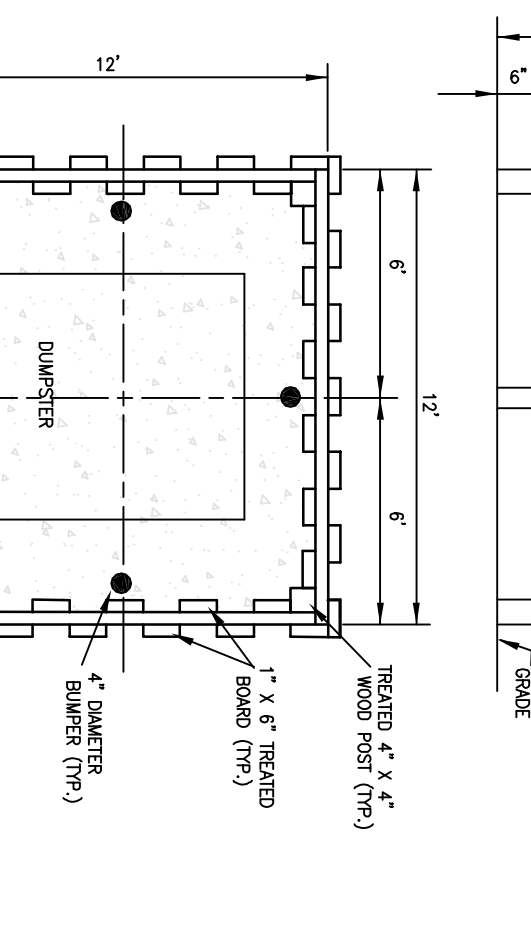
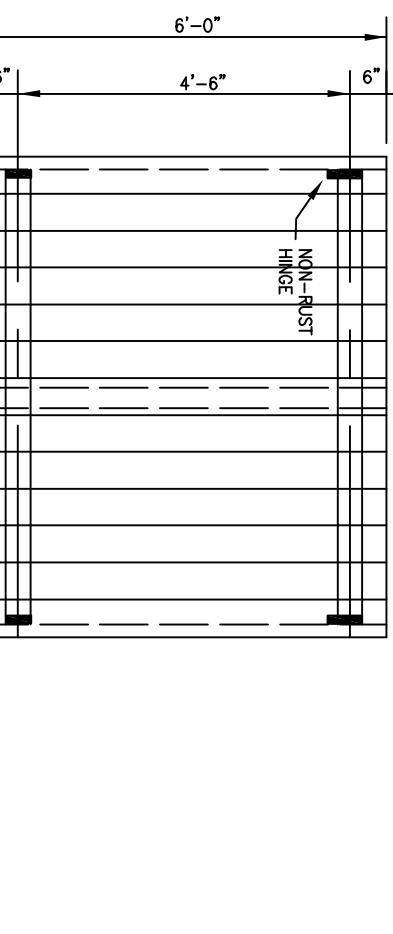
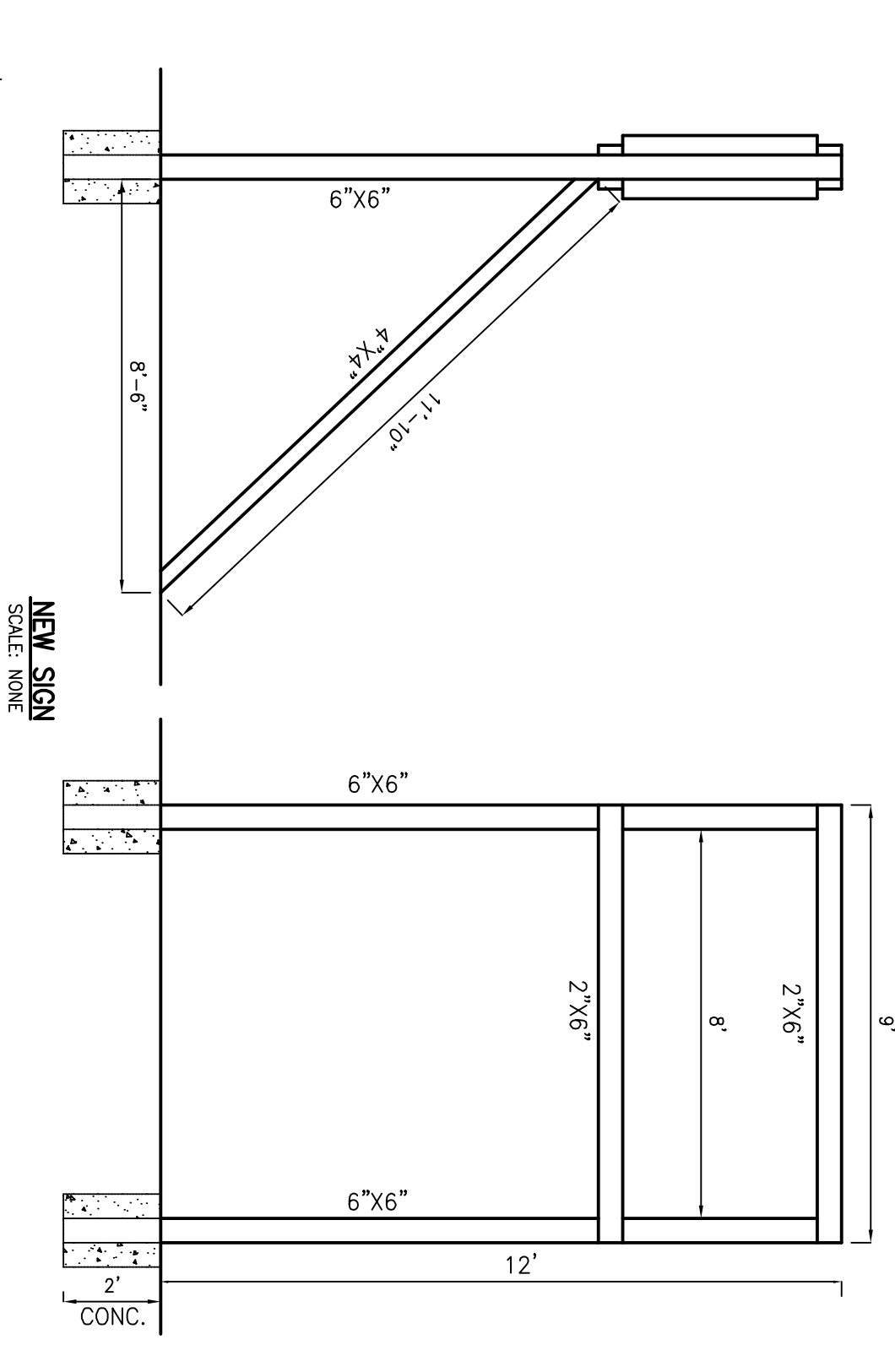


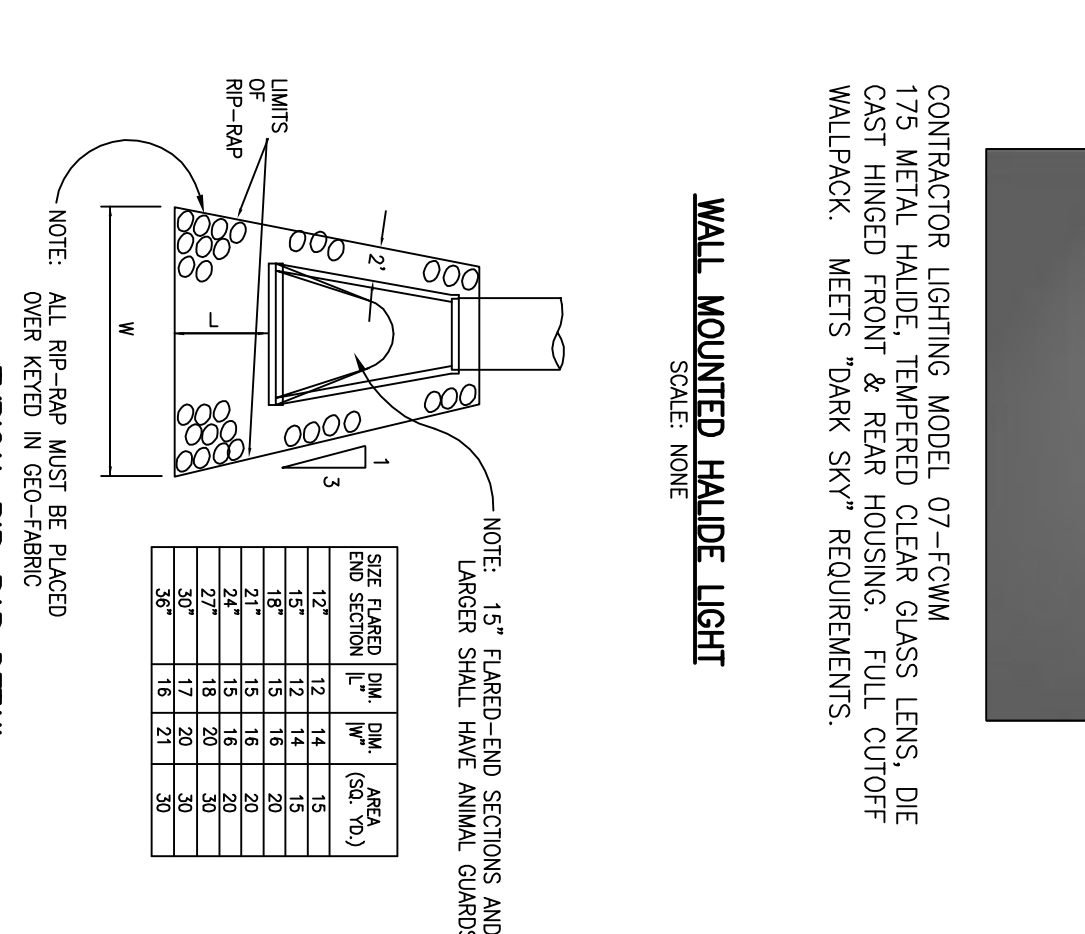
NEON SIGN WILL BE GREEN AND ON WHEN OPEN, TURN OFF AT CLOSE.



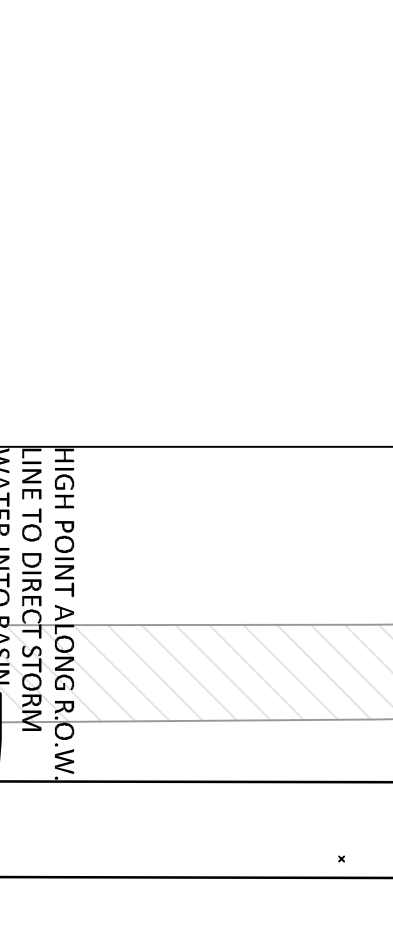
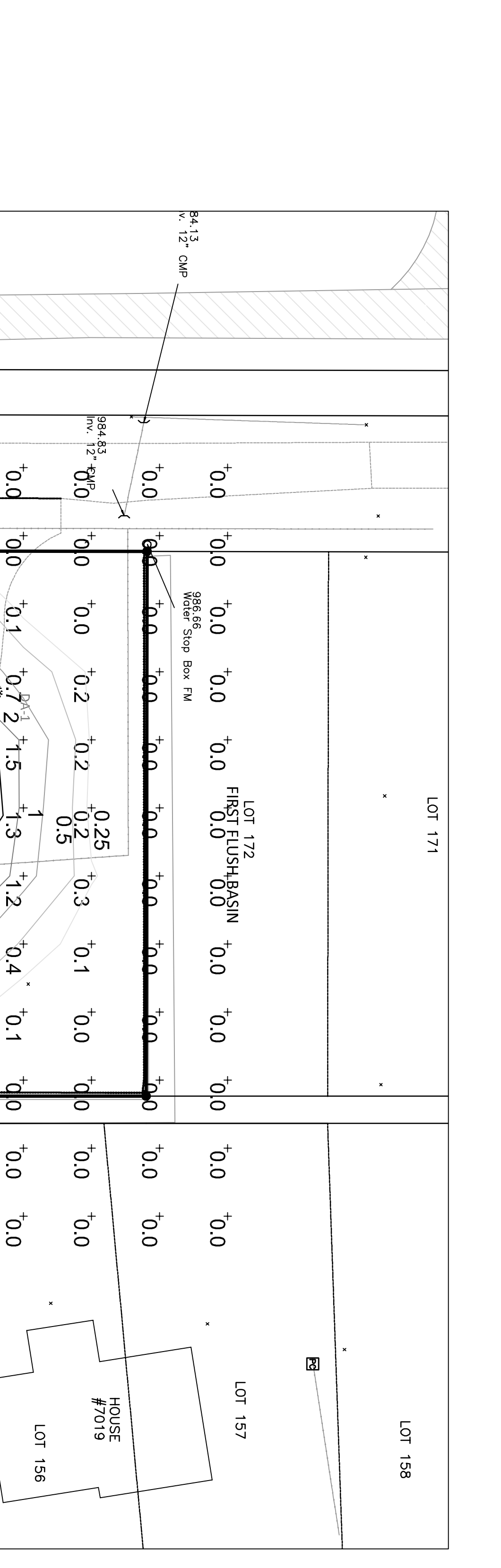
ENTRANCE SIGN
SCALE: NONE



NEON SIGN WILL BE GREEN AND ON WHEN OPEN, TURN OFF AT CLOSE.



ENTRANCE SIGN
SCALE: NONE



CONTROLS & MEASURES POST CONSTRUCTION SEQUENCE			
ACTIVITY	WEEKLY	MONTHLY	AS REQUIRED
MAINTAIN LANDSCAPING, REPLACE MULCH	X	X	X
CLEAN INLETS	X	X	X
COLLECT LITTER	X	X	X
SWEEP PARKING LOT	X	X	X
INSPECT BASIN FOR INFILTRATION CAPACITY	X	X	X

CONTROLS & MEASURES NARRATIVE	
ACTIVITY	DESCRIPTION
LANDSCAPING, REPLACE MULCH	COLLECT & DISPOSE OF MULCH AS APPROVED
CLEAN INLETS	REMOVE LITTER, SEDIMENT, AND DEBRIS FROM INLETS AS APPROVED
COLLECT LITTER	REMOVE LITTER, DIRT, GRASS, AND OIL WITH PERIODIC SWEEPING
SWEEP PARKING LOT	REMOVE MULCH, DIRT, GRASS, AND OIL WITH PERIODIC SWEEPING
DUST CONTROL	SPRINKLE WATER AS NEEDED

SITE LIGHTING SUMMARY
LIGHTING LEVELS ARE SHOWN IN FOOTCANDLES AT 5' ABOVE GRADE.
MAX. LIGHT LEVEL AT THE PROPERTY LINE: 0.10 FC.
MIN. LIGHT LEVEL AT THE PROPERTY LINE: 0.00 FC.

GENERAL LIGHTING NOTES

- THE LIGHTING PATTERN REPRESENTS ILLUMINATION LEVELS CALCULATED FROM LABORATORY DATA TAKEN UNDER CONTROLLED CONDITIONS IN ACCORDANCE WITH ILLUMINATING ENGINEERING SOCIETY APPROVED METHODS. ACTUAL PERFORMANCE OF ANY MANUFACTURER'S LUMINAIRE MAY VARY DUE TO VARIATION IN FIELD CONDITIONS.
- ALL POLES ARE TO BE MOUNTED ON CONCRETE POSTS AS SHOWN IN DETAIL.
- ALL POLES LOCATED OUTSIDE OF THE PARKING AREA SHALL BE LOCATED 3' FROM BACK OF CURB OR EDGE OF SIDEWALKS.
- SHOP DRAWINGS FOR THE ELECTRICAL WIRING OF THE POLES NEED TO BE SUBMITTED TO THE ENGINEER FOR COORDINATION OF UNDERGROUND CONDUIT AND APPROVAL OF LAYOUT.

SYMBOL	LABEL	QTY.	DESCRIPTION	CATALOG NUMBER	LAMP	FILE	LUMENS	LF	POLE DESCRIPTION	POLE HEIGHT	BASE HEIGHT	TOTAL HEIGHT
SM	SM	1	COOPER LIGHTING - GALLERIA SQUARE	GSMA-AM-320-AP-AT-3V-FG-BK-HS-MA1000	320W PULSED-START CLEAR ED-28 VBU BURN	GSMA-XX-320-AP-7X-3V-FG-IES	30,000	.72	SMAMBNA	18'	2'-6"	20'-6"
BW	BW	1	COOPER LIGHTING - GALLERIA SQUARE	GSMA-XX-320-AP-XX-3S-FG-BK-HS-MA1000	320W PULSED-START CLEAR ED-28 VBU BURN	GSMA-XX-320-AP-7X-XX-3S-FG-IES	34,000	.72	SMAMBNA	18'	2'-6"	20'-6"
FW	FW	1	COOPER LIGHTING - GALLERIA SQUARE	GSMA-XX-350-AP-XX-FT-5G-BK-HS-MA1000	350W PULSED-START CLEAR ED-28 VBU BURN	GSMA-XX-350-AP-7X-XX-FT-5G-IES	33,000	.72	SMAMBNA	18'	2'-6"	20'-6"

ALL IES FILES PROVIDED BY MANUFACTURER FOR CALCULATION OF LIGHTING LEVEL.

THE LOCATION AND ELEVATION OF EXISTING UNDERGROUND UTILITIES AS SHOWN ON THESE DRAWINGS ARE ONLY APPROXIMATE. NO WARRANTY IS EITHER EXPRESSED OR IMPLIED AS TO THE COMPLETENESS OR ACCURACY THEREOF. THE CONTRACTOR SHALL BE EXCLUSIVELY RESPONSIBLE FOR DETERMINING THE EXACT LOCATION AND ELEVATION OF EXISTING UTILITIES AND PROPOSED UTILITY CROSSINGS IN THE FIELD PRIOR TO CONSTRUCTION. THE CONTRACTOR SHALL NOTIFY THE ENGINEER IF ANY CONFLICTS ARE APPARENT OR IF THE LOCATION OR DEPTH DIFFERS SIGNIFICANTLY FROM THE PLANS.



BOSS ENGINEERING
ENGINEERS • SURVEYORS • PLANNERS
LANDSCAPE ARCHITECTS
(E-MAIL: be@bosseng.com)
3121 E. GRAND RIVER AVE.
HOWELL, MI. 48843
(800) 246-6735 FAX (517) 548-1670

INVERNESS INN
INVERNESS INN, LLC
11829 WESTSHORE DRIVE
PUTNAM TOWNSHIP, MI 48169
(313) 207-3610
DETAILS

NO.	BY	REVISION	DATE
10	TD	PER TWP. REVIEW	07-11-13
9	TD	PER AGENCY REVIEW	4-19-13
8	TD	PER AGENCY REVIEW	5-7-12
7	TD	PER AGENCY REVIEW	01-26-12
6	TD	PER TWP. REVIEW	12-12-11
5	TD	DUMPSTER RELOCATION	11-9-11
4	TD	ADD SIGN, GRAVEL DETAILS	07/28/09
3	TD	REVISED BASIN	01/29/08
2	TD	TOWNSHIP REVIEW	10/24/07
1	TD	TOWNSHIP REVIEW	08/31/07

PROJECT: INVERNESS INN
PREPARED FOR: INVERNESS INN, LLC
DRAWN BY: WHN
CHECKED BY:
SCALE: AS NOTED
JOB NO.: 07093
DATE: 07-03-07
SHEET NO.: 3 OF 3